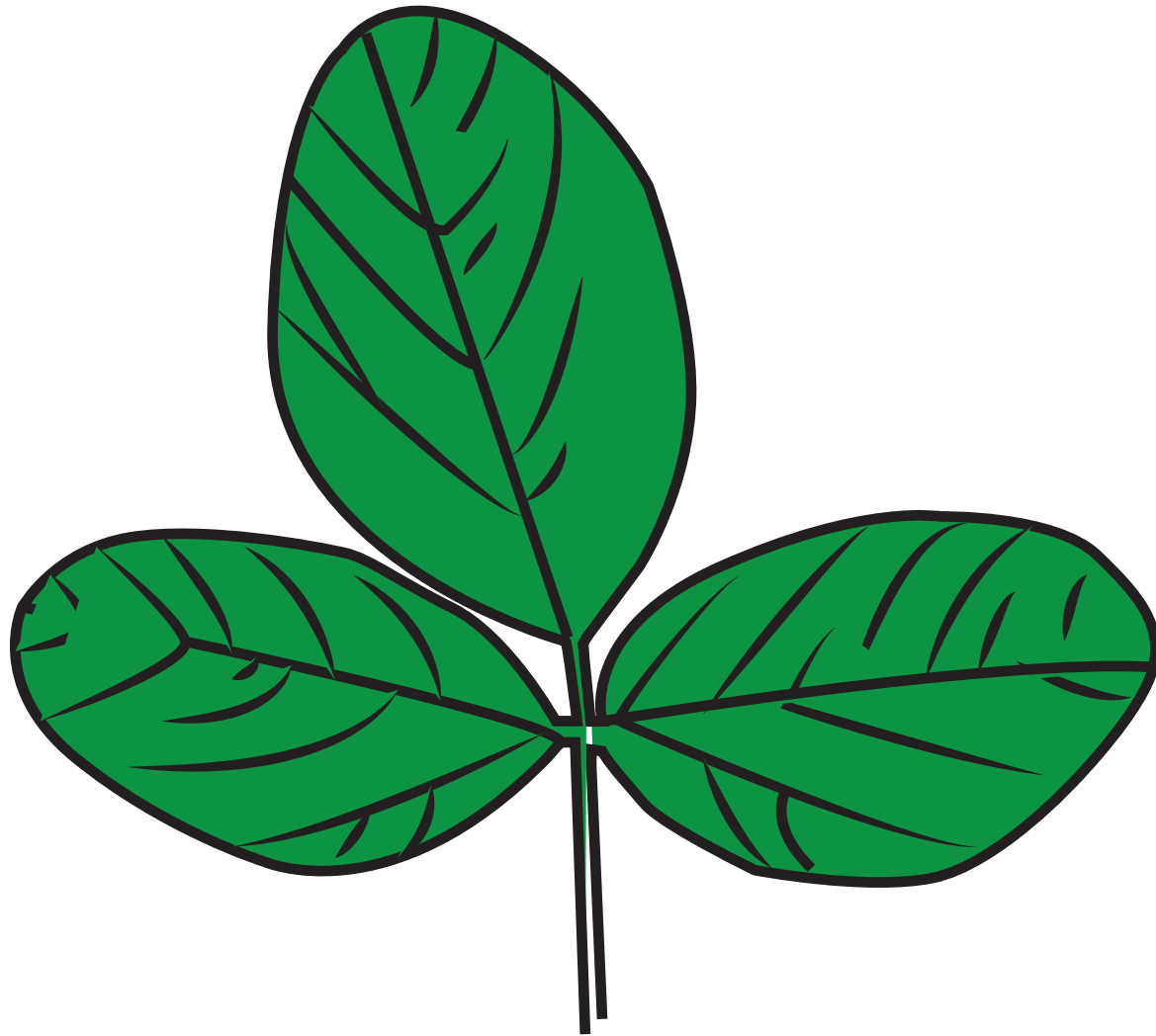
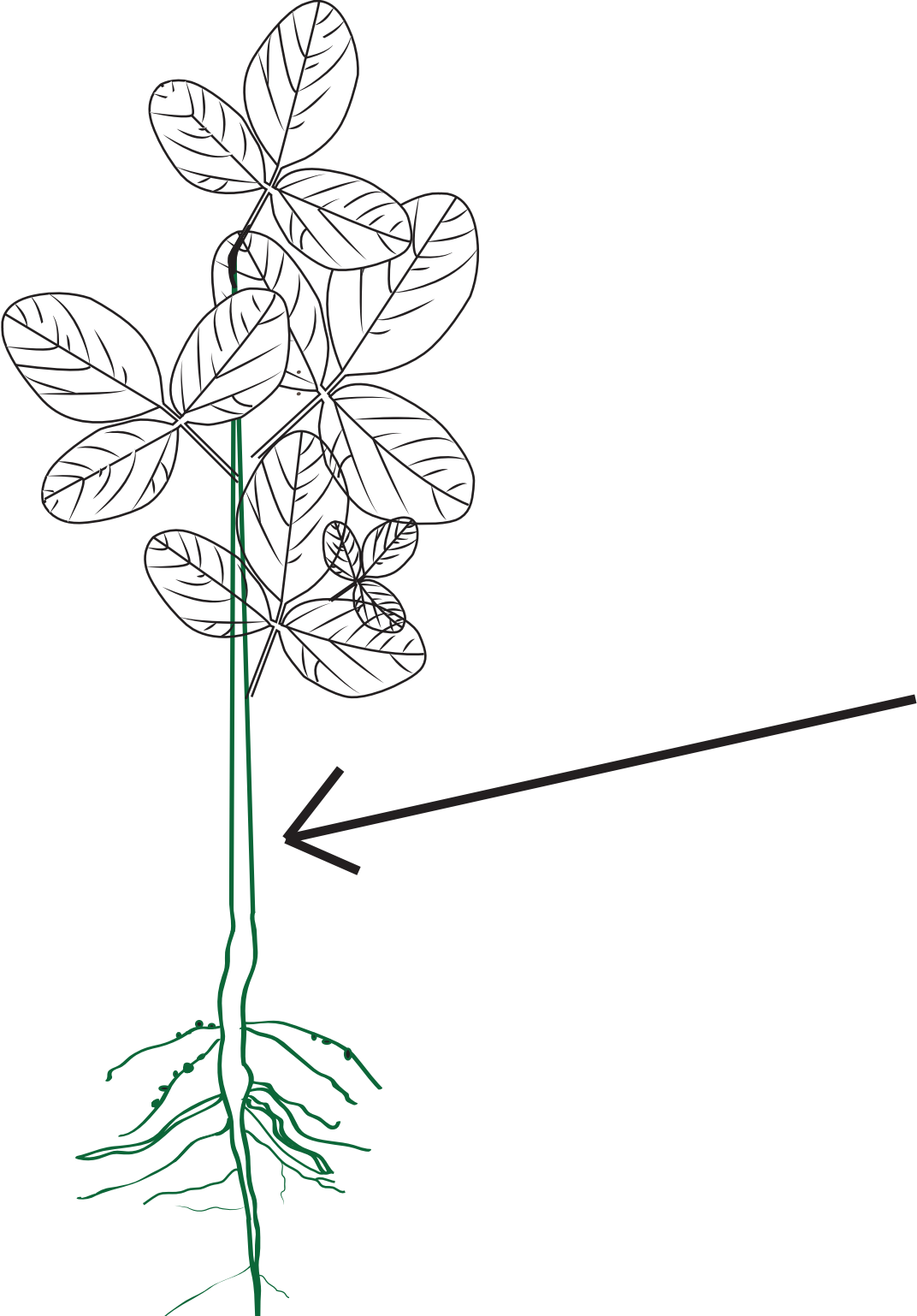


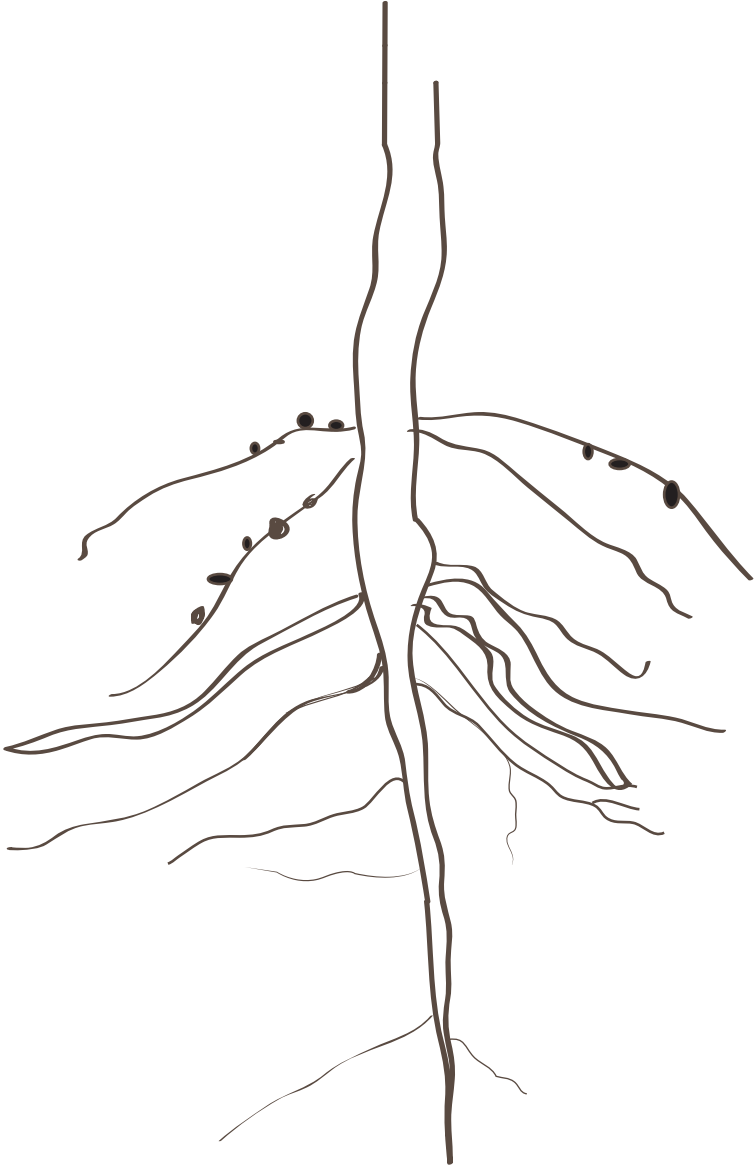
Attract pollinators  
and contain plant  
reproductive parts



Convert sunlight  
to energy through  
photosynthesis

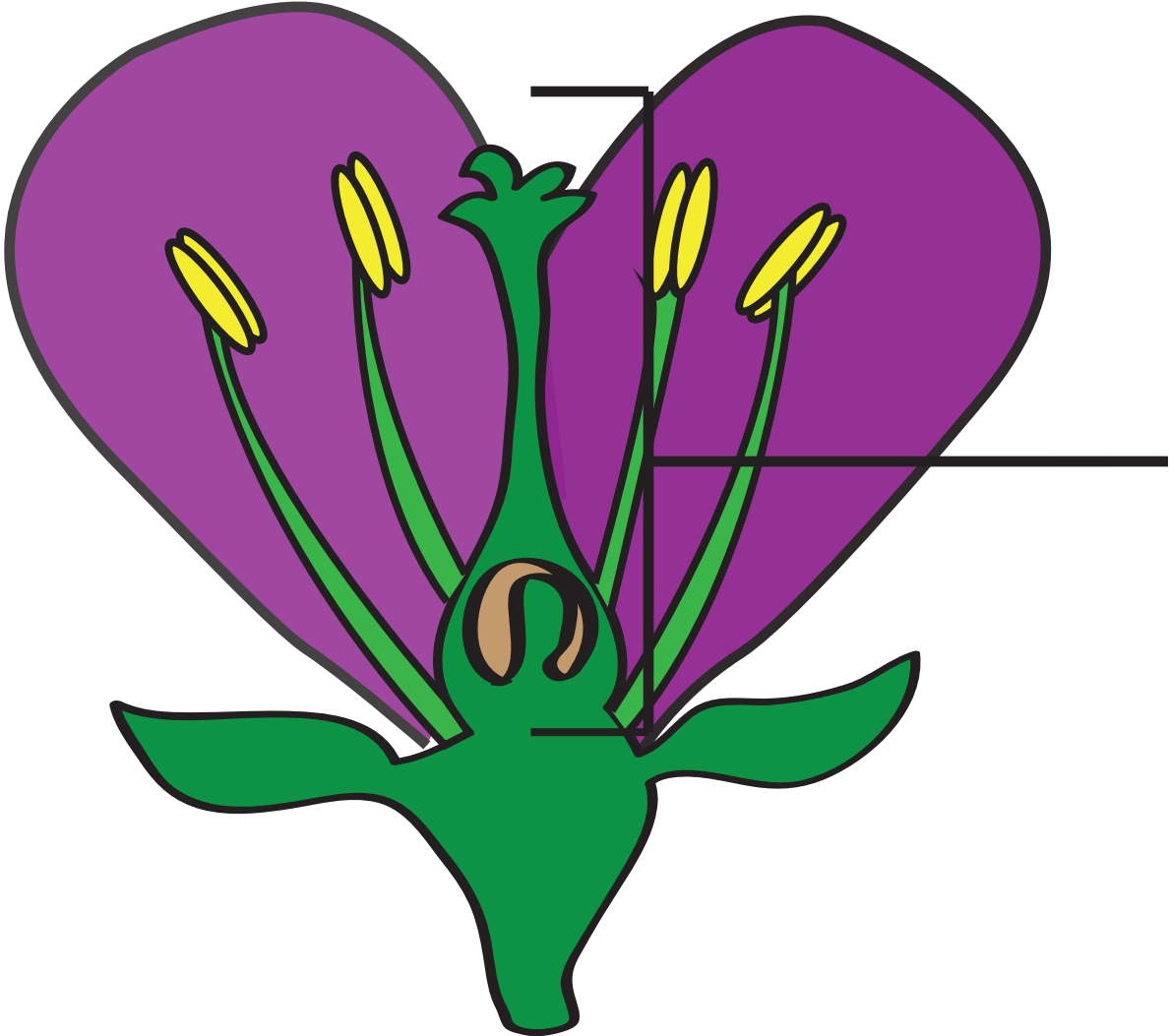


Carry water,  
minerals and  
sugars  
throughout the  
plant

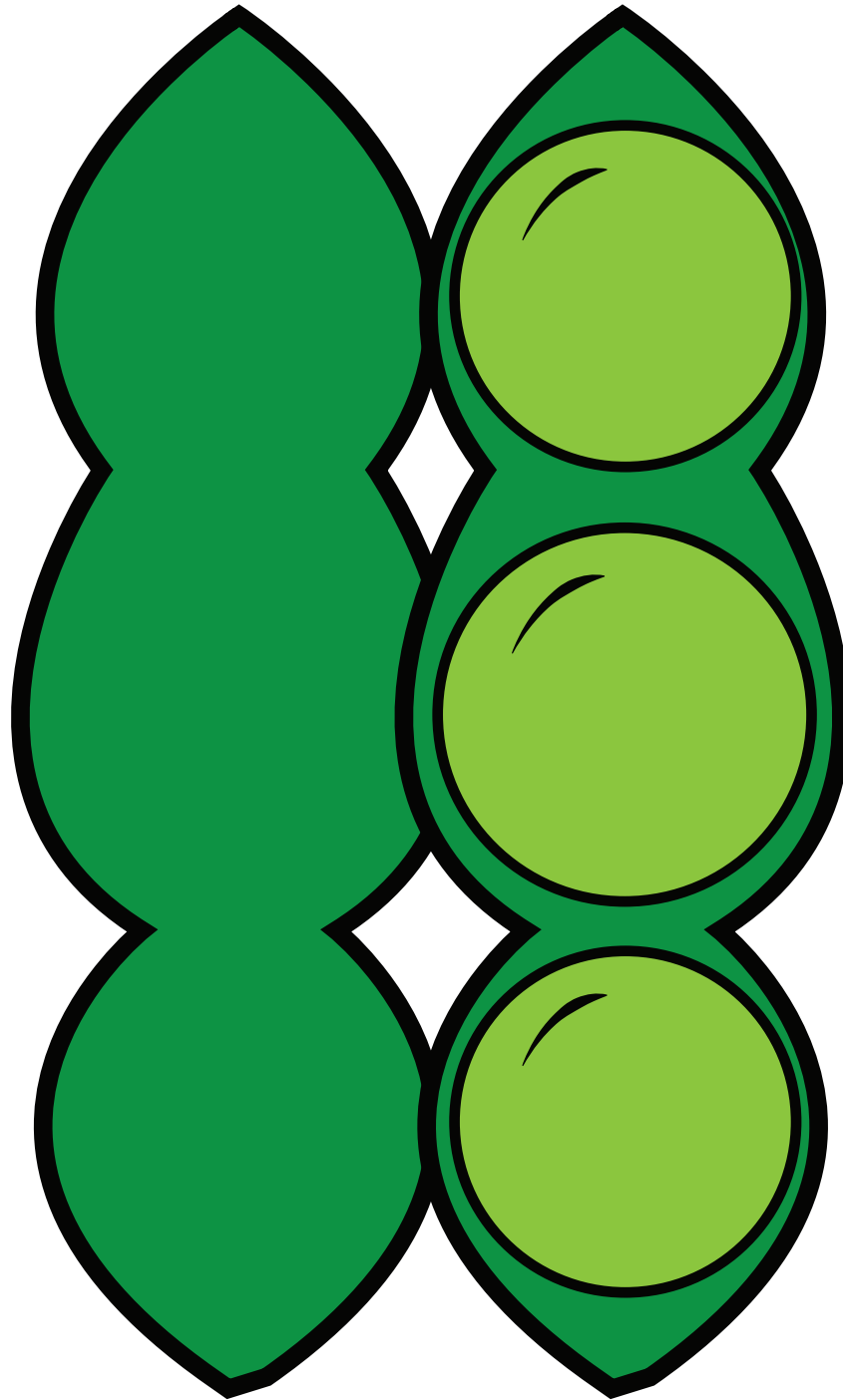


Anchor and  
support of plant,  
absorption,  
storage

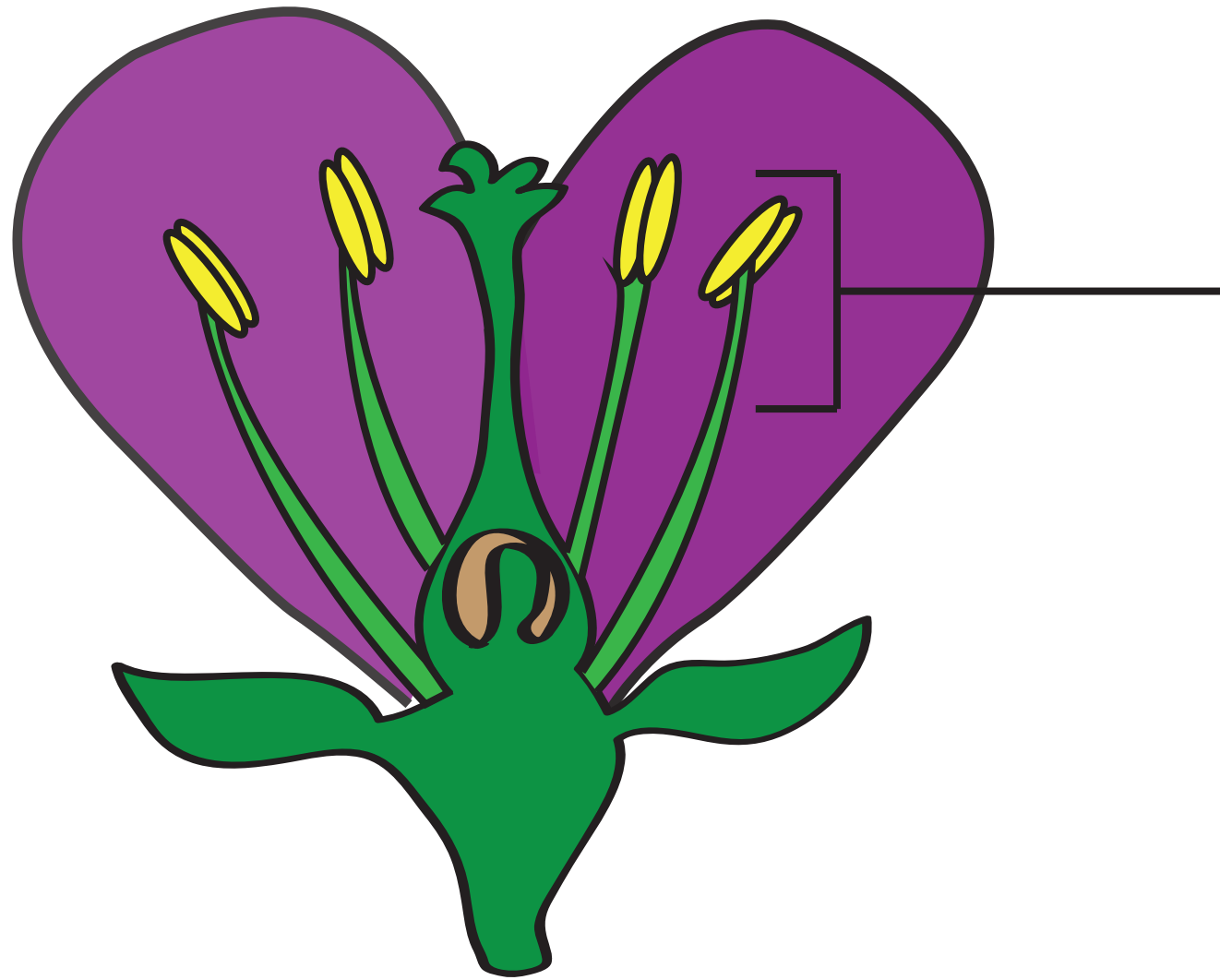




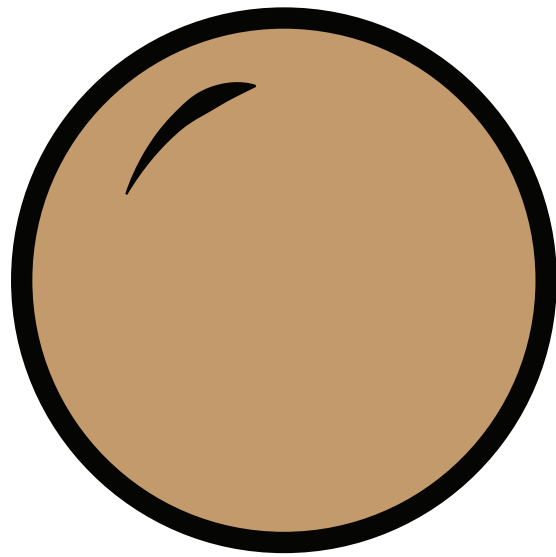
Pollen receiving  
part of the  
flower; female  
reproductive  
part



Contains and  
helps to disperse  
seeds

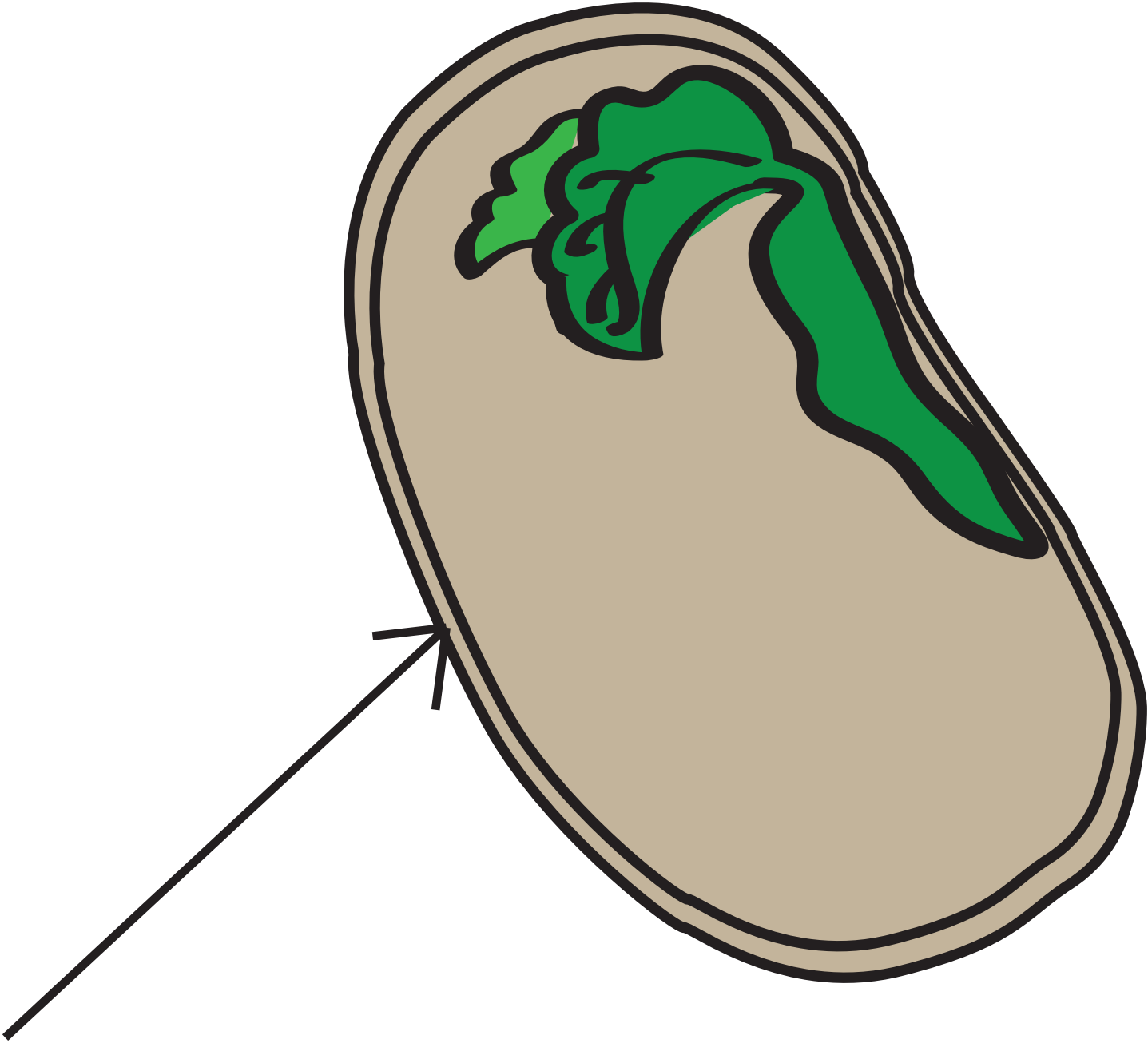


Produce pollen  
grains; male  
reproductive part

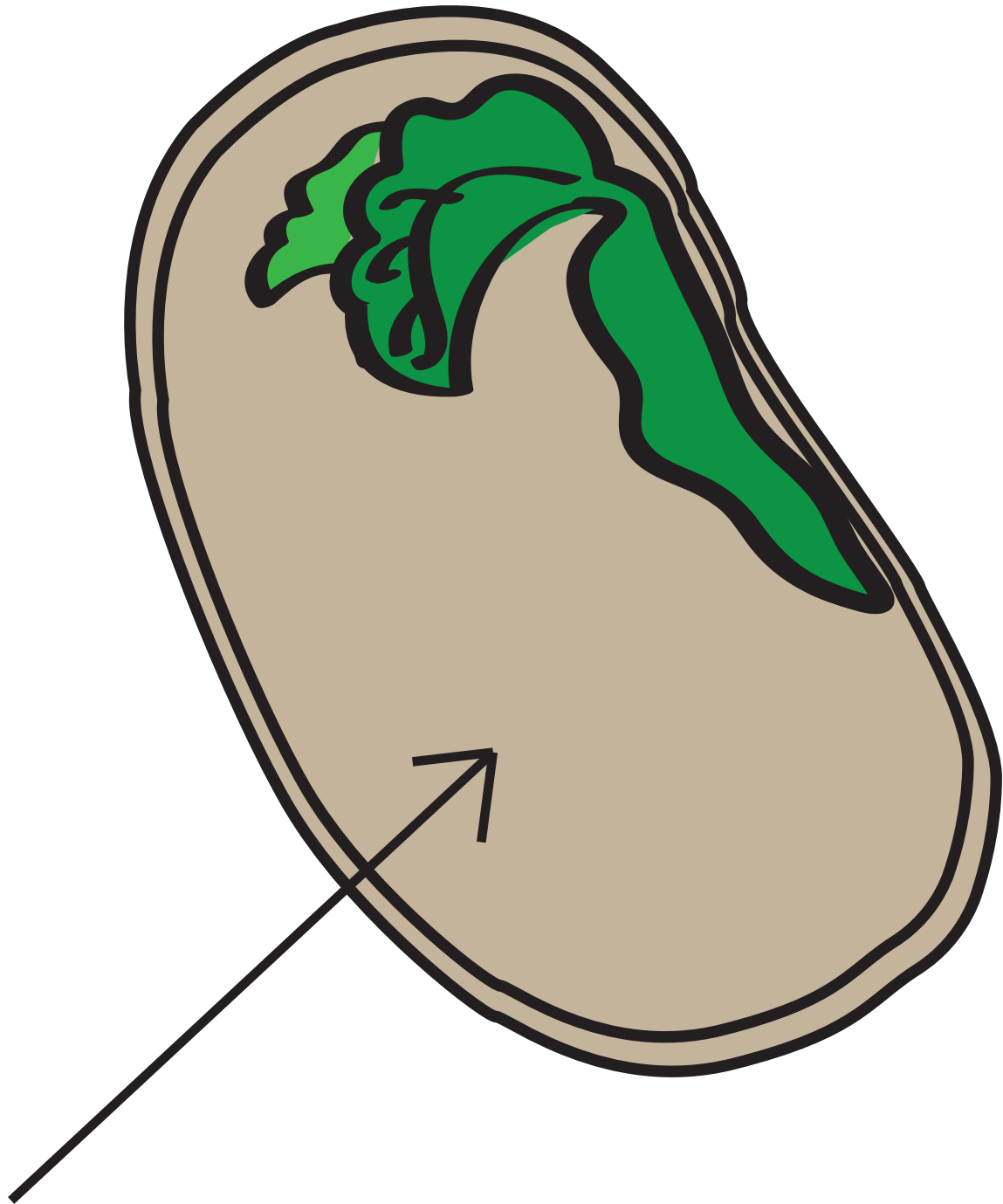


Protect the  
embryo from  
which a new  
plant grows

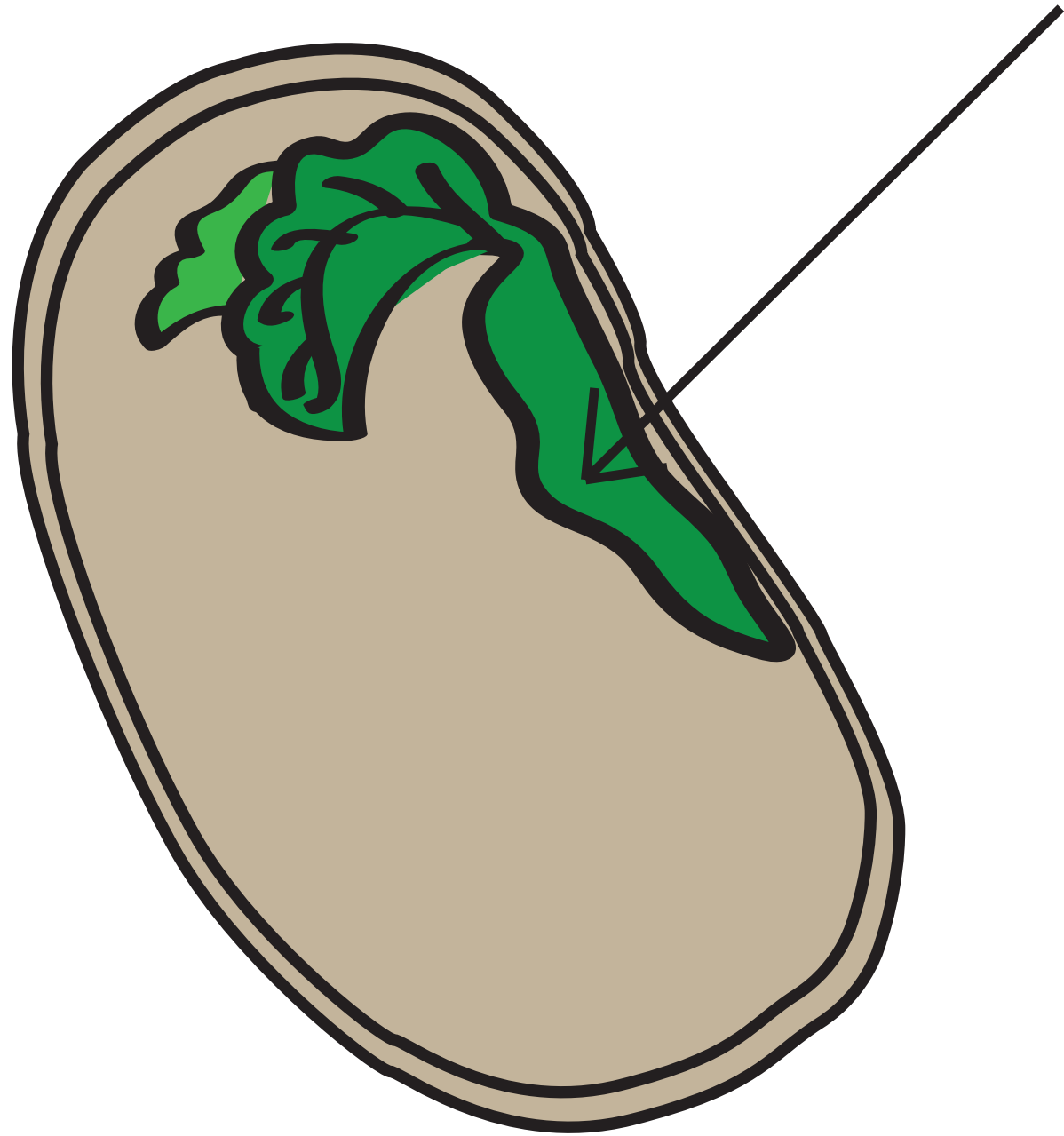




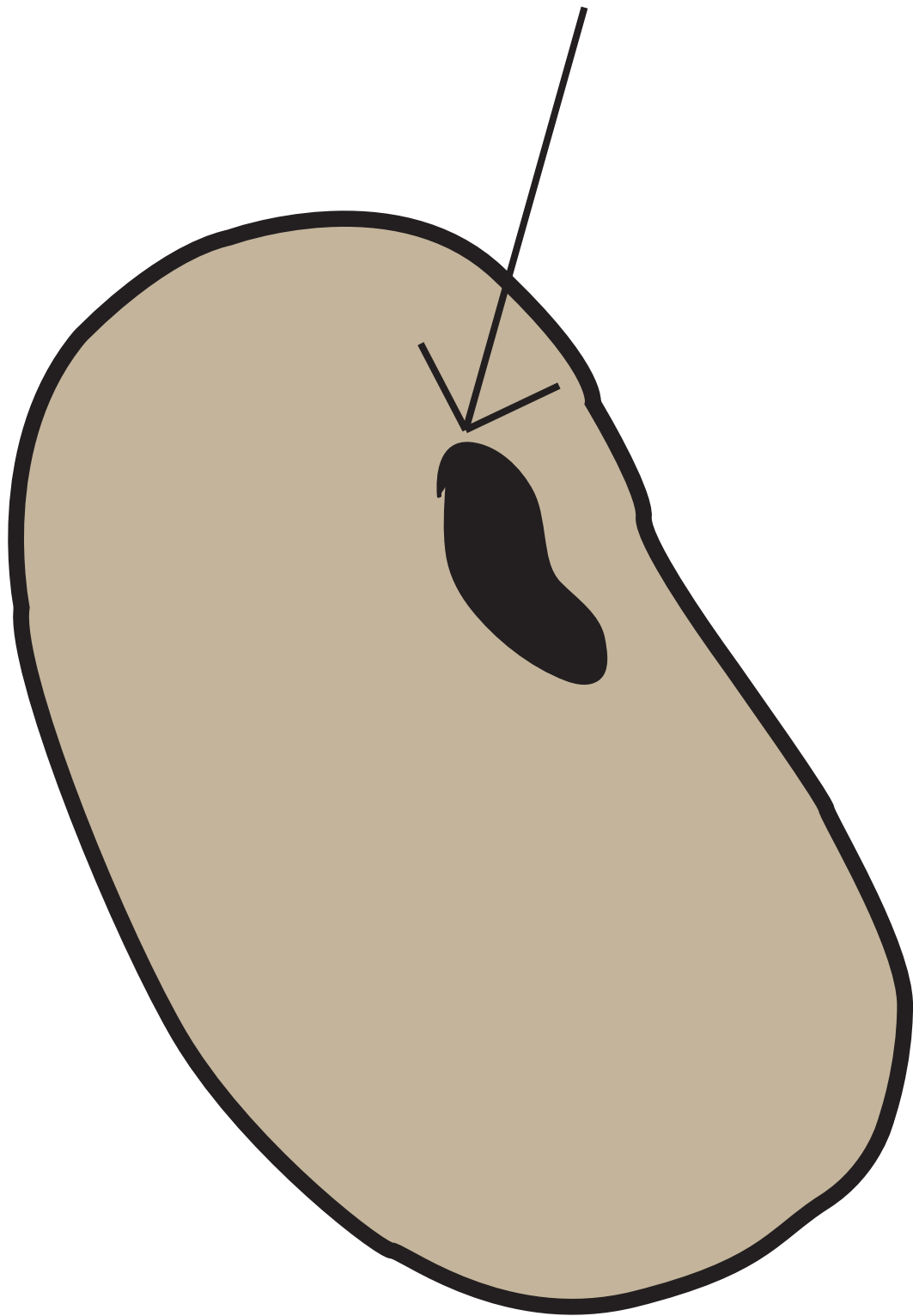
Cover and protect  
the seed



Provides energy  
for germinating  
seed & becomes  
the first leaves in  
beans and peas.

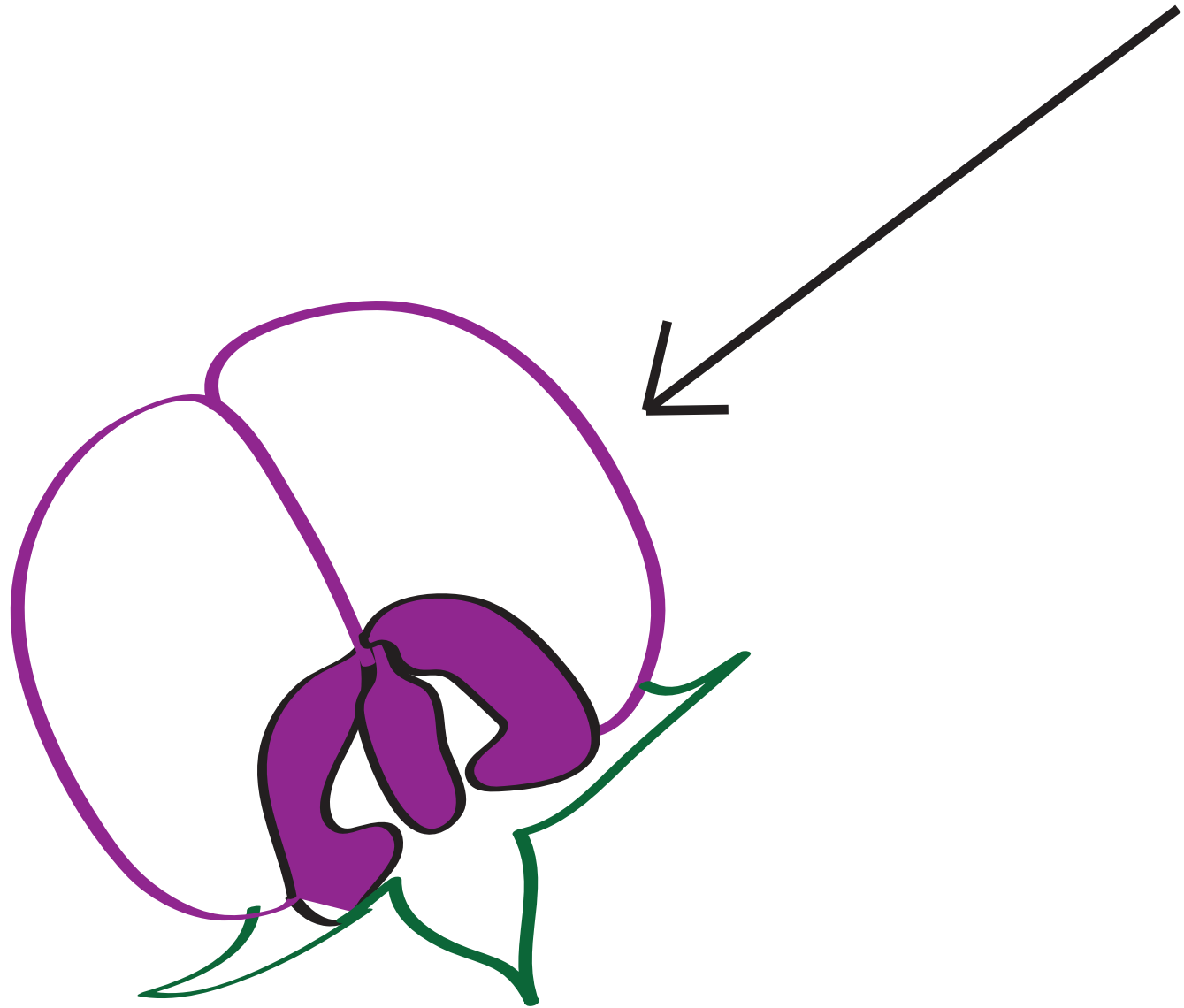


Stem of a  
germinating  
seedling

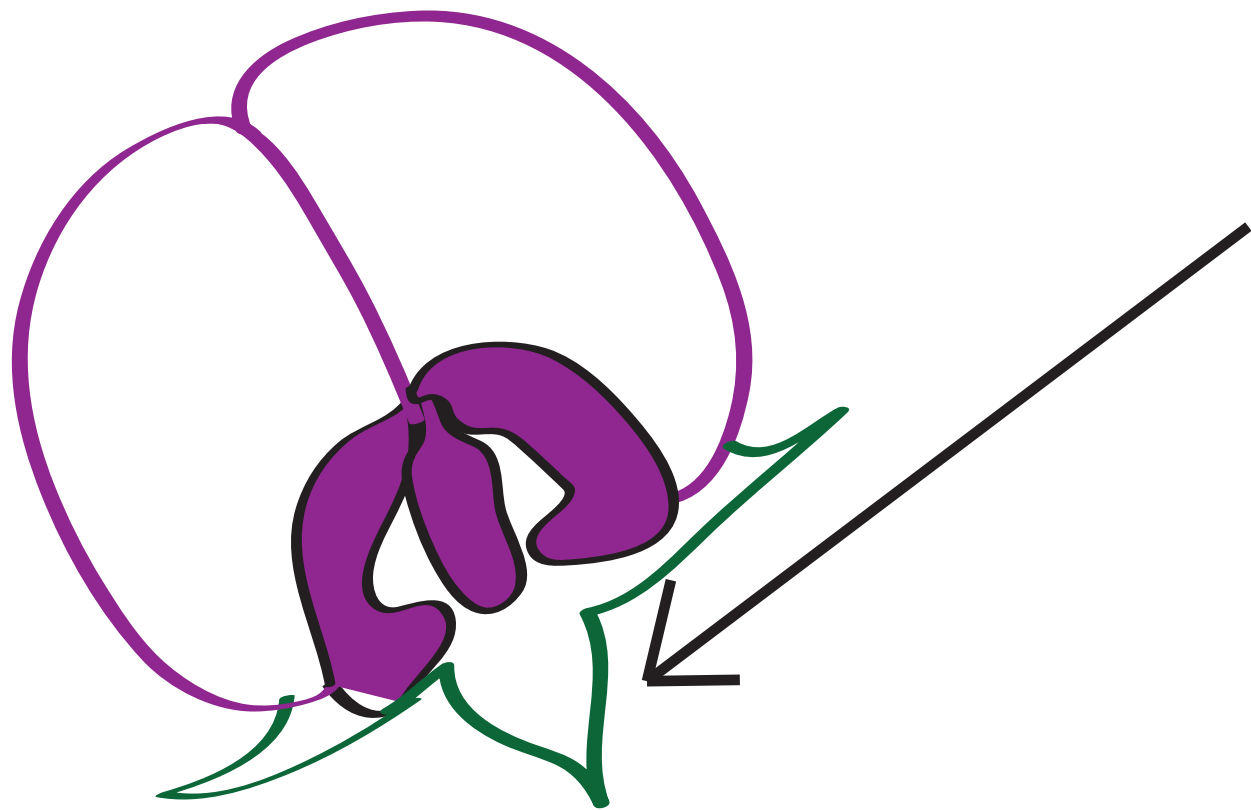


The scar on a  
bean seed  
marking the  
attachment to the  
pod.

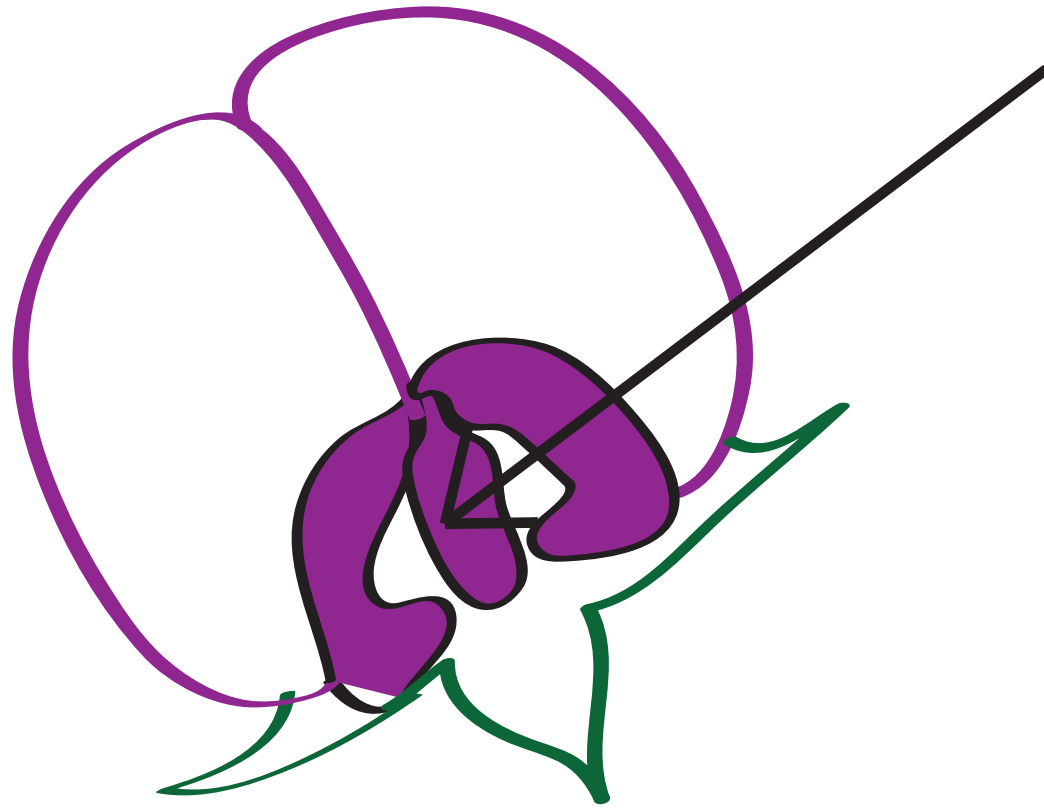




Part of the flower  
that provides a  
platform for  
pollinators &  
protects  
reproductive parts



Protect and  
support petals

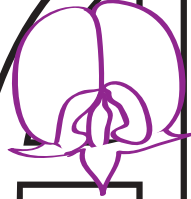
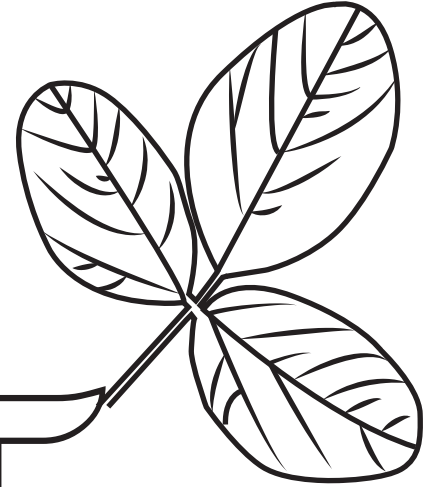
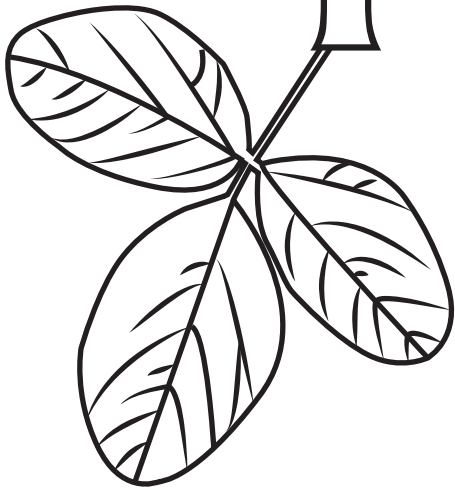


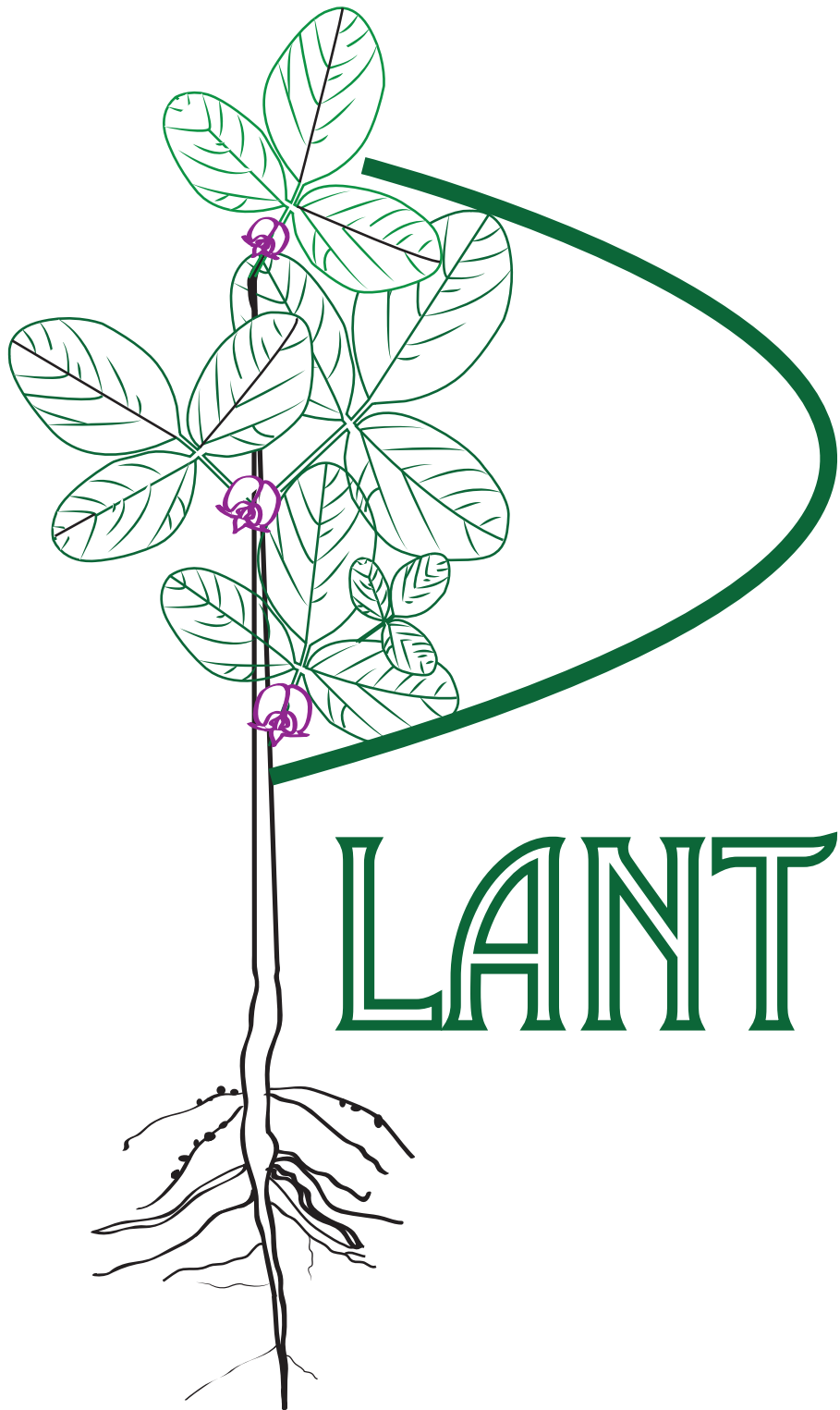
Part of the pistil  
that will  
develop into a  
seed

The

PLANT

MATCH





# LANT MATCH

















